

Bock F5

Specifications

Brand	Bock
Type	F5
Refrigerant	Freon
kW at +10°C/+40°C	83.33
kW at 0°C/+40°C	59.40
kW at -5°C/+40°C	49.15
kW at -10°C/+40°C	40.01
kW at -20°C/+40°C	24.94
kW at -30°C/+40°C	13.98
kW at -40°C/+40°C	6.89
kW at -45°C/+40°C	4.72
Electromotor Specs	15
On steel base frame	✓
Pressure safety switches	✓
Hp/Lp/Op	
Pressure gauges	✓
Hp/Lp/Op	
Liquid receiver	✓
Oil separator	✓
Liquid line filter drier	✓
Sight Glass	✓
Remarks	# // Electromotor: 15 kW at 1445/1460 RPM // Pulley EM: 230 / Comp: 230
Remarks	R404a - R22 or other freon types



Sizes	1300x1200x1250 mm (LxWxH)
-------	------------------------------

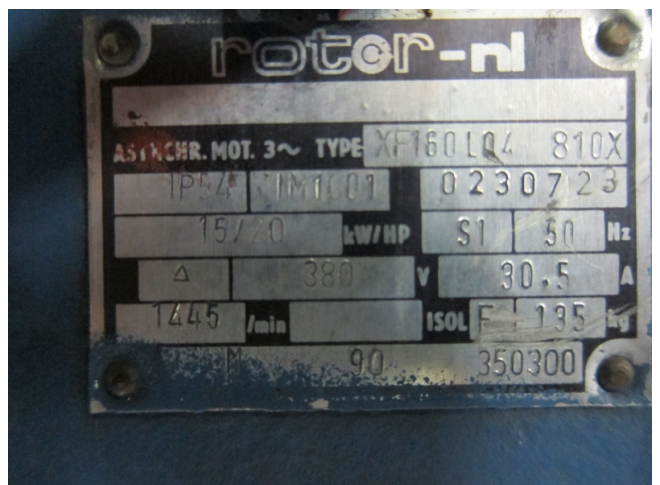
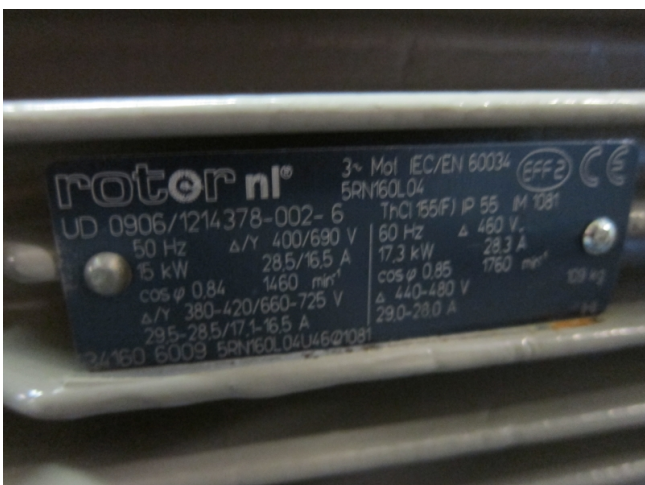
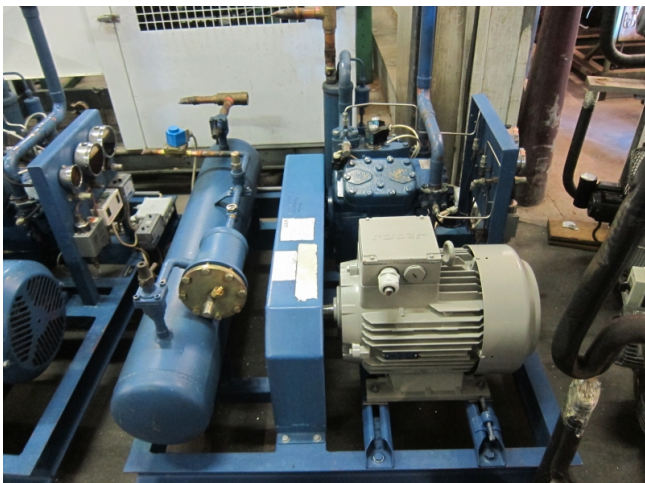
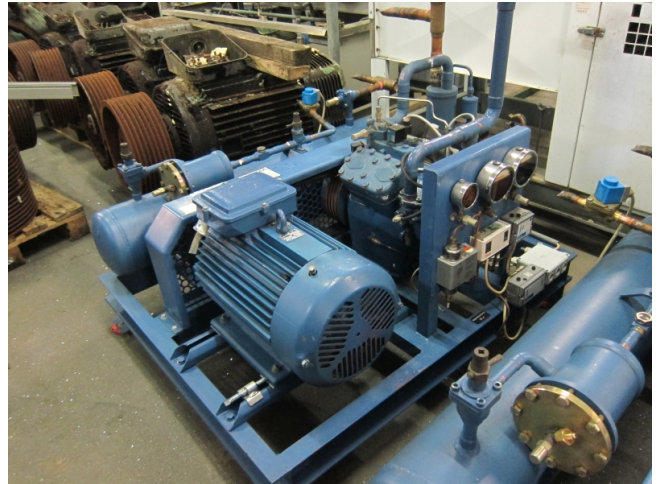
Stock	2
-------	---

Description

Used Bock F5

Used Bock F5 freon compressor, complete with pressure safety switches, pressure gauges, liquid receiver, oil separator, liquid line filter drier and sight glass.

Why choose for HOSBV? We're not only the largest used refrigeration specialist in Europe, but also, we deliver all equipment including an extensive test, warranty and deliver after an industrial cleaning. *If requested we are happy to arrange your logistics.



R404A/R507		Performance data											1.450 rpm				
Type	Cond. temp. °C	Cooling capacity \dot{Q}_0 [W]					Power P [kW]										
		Evaporating temperature °C															
		10	5	0	-5	-10	-15	-20	-25	-30	-35	-40	-45				
FX2	30	Q 13423	11418	9621	8020	6606	5366	4290	3366	2584	1933	1402	979				
		P 2,21	2,19	2,13	2,05	1,94	1,80	1,65	1,48	1,31	1,12	0,94	0,75				
	40	Q 11561	9785	8201	6797	5562	4485	3555	2761	2092	1537	1085	724				
		P 2,65	2,56	2,44	2,30	2,13	1,95	1,76	1,55	1,34	1,12	0,91	0,70				
	50	Q 9652	8113	6749	5548	4500	3593	2816	2159	1609	1157	791	523				
FX3	30	Q 28402	24165	20377	17011	14041	11442	9187	7251	5608	4231	3096	2175				
		P 3,92	3,97	3,84	3,63	3,44	3,17	2,88	2,56	2,23	1,90	1,57	1,27				
	40	Q 24498	20763	17437	14495	11911	9657	7710	6042	4628	3442	2458	1650				
		P 4,97	4,89	4,66	4,41	4,11	3,77	3,40	3,01	2,61	2,21	1,83	1,46				
	50	Q 20584	17356	14498	11985	9781	7889	6254	4860	3680	2660	1862	1282				
FX4	30	Q 53909	45836	38585	32117	26393	21373	17019	13292	10151	7559	5476	3862				
		P 8,34	8,30	8,09	7,73	7,25	6,68	6,04	5,36	4,66	3,96	3,29	2,69				
	40	Q 46772	39538	33069	27326	22270	17862	14063	10834	8135	5928	4173	2832				
		P 10,09	9,75	9,27	8,67	7,98	7,21	6,41	5,59	4,78	4,00	3,27	2,63				
	50	Q 39157	32814	27179	22214	17880	14137	10946	8268	6064	4295	2922	1957				
FX5	30	Q 1144	10,83	10,10	9,28	8,40	7,47	6,53	5,59	4,69	3,80	3,09	2,42				
		P 24654	81844	68253	57854	47620	38522	30533	23624	17768	12938	9105	6242				
	40	Q 82453	70788	59601	49154	40014	31955	24688	18967	13951	9955	6999	4728				
		P 16,87	16,64	16,05	15,16	14,03	12,72	11,28	9,79	8,29	6,85	5,53	4,39				
	50	Q 70427	59251	49183	40194	32258	25345	19428	14480	10472	7377	5168	3587				
FX14/1166	30	Q 131605	112604	95281	79598	65518	53000	42008	32503	24447	17801	12527	8587				
		P 17,86	18,55	18,64	18,22	17,27	16,17	14,71	13,06	11,32	9,55	7,85	6,29				
	40	Q 114650	97288	81727	67628	55054	43966	34326	26096	19237	13711	9480	6506				
		P 23,21	22,89	22,08	20,86	19,30	17,49	15,52	13,47	11,41	9,43	7,61	6,04				
	50	Q 96896	81521	67668	55301	44382	34871	26730	19922	14408	10150	7110	4888				
FX14/1366	30	Q 154448	132149	111819	93414	76889	62199	49299	38144	28690	20890	14701	10078				
		P 20,96	21,77	21,87	21,36	20,38	18,96	17,26	15,33	13,28	11,21	9,21	7,38				
	40	Q 134550	114291	95912	79366	64609	51597	40284	30625	22575	16091	11125	7635				